



©Benny Migs Photography

April 30, 2024

Village of Patchogue Shorefront Park

# Living Shoreline and Little Creek Restoration



# Meeting The Project Team



**Carlos Vargas**  
VHB Project Manager



**Marian Russo**  
Village Project Manager



**Neville Reynolds**  
Coastal Geologist & Coastal  
Practice Leader

# Project Background

- Shorefront Park is a 7-acre park on the Great South Bay
- Severe flooding during Hurricane Irene and Superstorm Sandy
- Little Creek
- Climate change adaptation



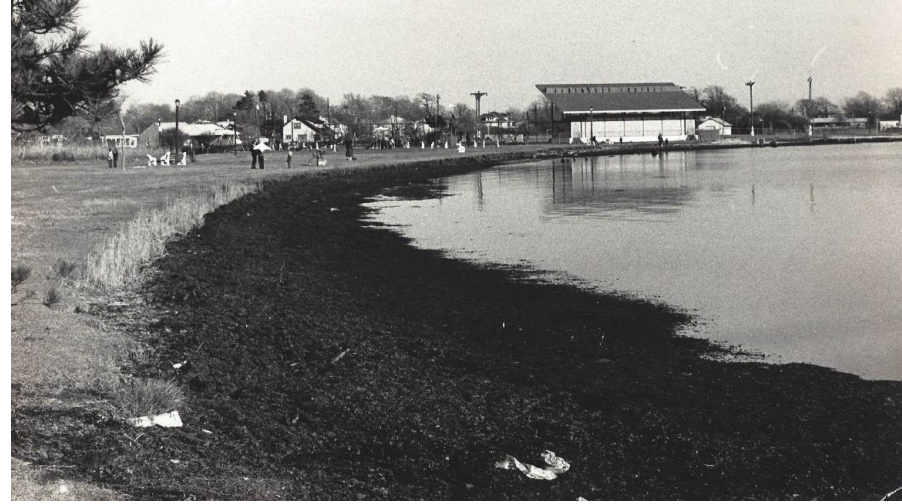
*Long Island Sound*

**Patchogue Shorefront Park**

*Atlantic Ocean*



# NNBF for Shorefront Park: Why







# NNBF for Shorefront Park: What

Natural Transitional Edge

High Energy Shoreline

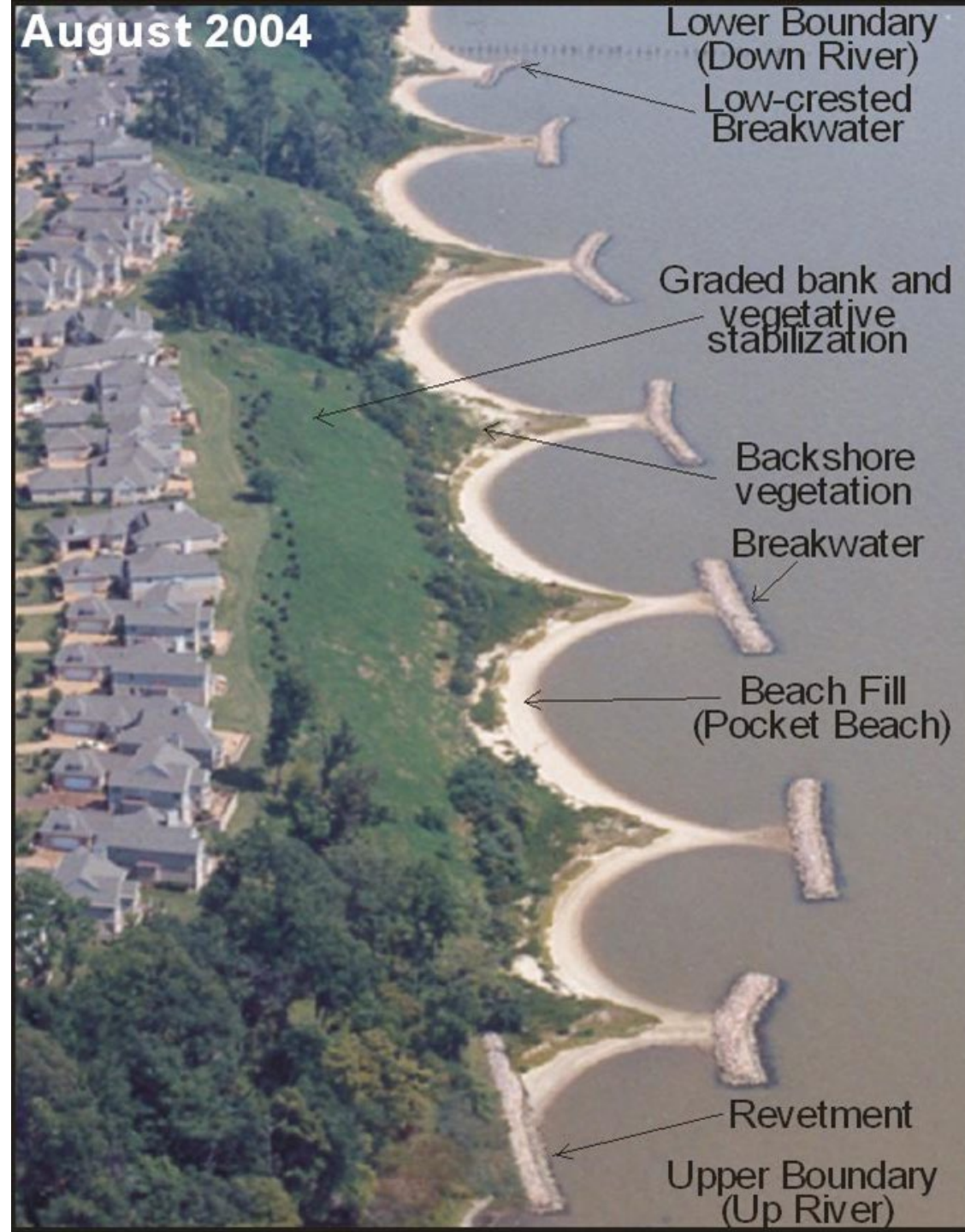
Dissipate Wave Energy

Treat Stormwater





# Kingsmill on the James River



# Kingsmill: James River



# Kingsmill



# Fox Creek: York River (1995)





# NNBF for Shorefront Park: What

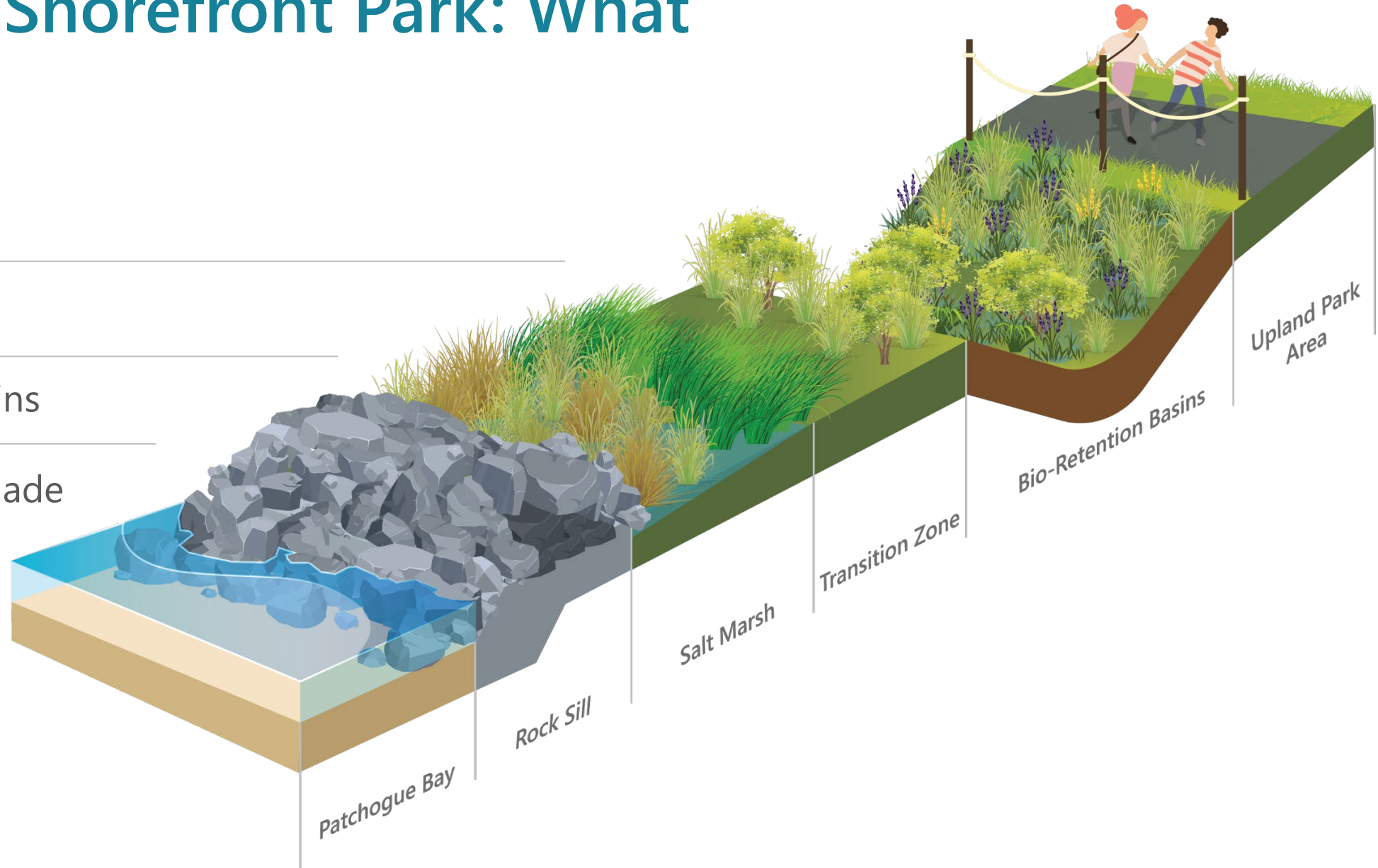
Hybrid Approach

Stone Sills

Salt Marsh

Bio-Retention Basins

Engineered Esplanade

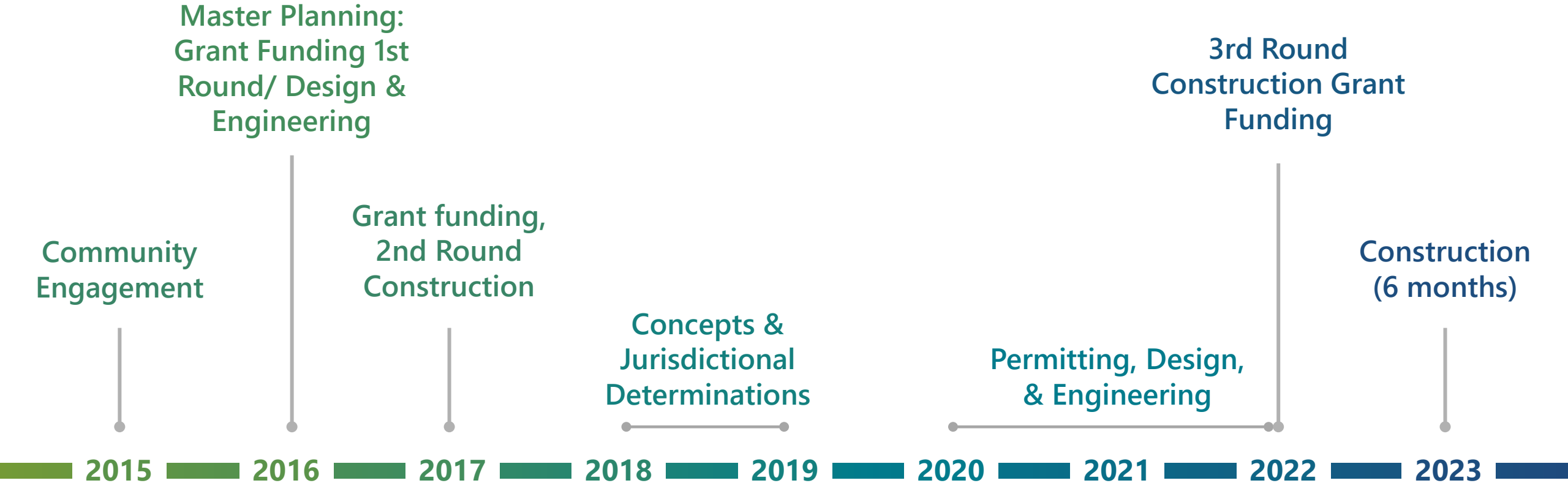








# Project Timeline



# Construction

## Construction Timeframe

*January 20, 2023—June 30, 2023*

## Current Status

Complete, Construction Monitoring in progress



# Project Outcomes

Coastal Resilience | Current Status | Net Benefits |  
Requirements | Next Steps/Improvements





# Project Funding

## GRANTS RECEIVED

**\$202K**

NYS Department of State: Living Shoreline Design

**\$3.8M**

NYS Department of State: Construction of Living Shoreline

**\$317K**

NYS Parks: walkways, kayak launch, & plantings

**\$45K**

NYS DEC: habitat restoration

**\$250K**

Suffolk County: Little Creek improvements

**\$2.1M**

Village's Match from Private Donation

**\$5.8M**

Construction Costs

**\$875K**

Design and Engineering

**\$5.8M**

Total Construction Cost

**\$4.6M**

Total Grants for Construction

# Challenges, Successes, and Lessons Learned



# Did the Project Meet Its Goals?



# Questions